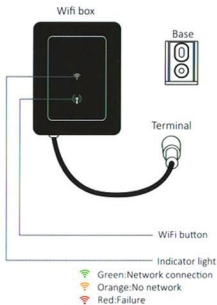
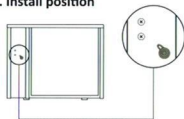


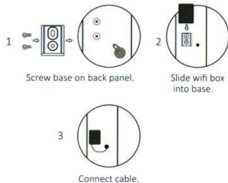
## a. Components



## b. Install position



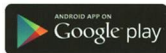
## c. Installation



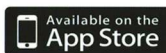
## 1. APP Download

Full-inverter<sup>®</sup>

Android mobile please download from



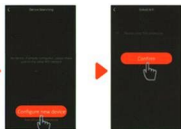
iphone please download from



## 2. APP Binding

1. Press Wifi button (ⓘ) for 3 seconds to enter binding program, light will flash.

2. Enter "Configure new device" in APP, follow indication to finish binding.



## 3. Operation



Notice:

1. If wifi signal cannot cover machine, please connect 10 m extend cable.
2. The weather forecast is just for reference.

APP is subject to updating without notice.