



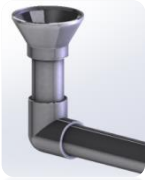
**FEATURES**

- ✓ Filters manufactured from polyester resin and fiberglass.
- ✓ Filtrating bed depth: 1m.
- ✓ Filter color: Ivory.
- ✓ Ø210 black polyester top lid from Ø500 up to Ø950 models and Ø400 black polyester top lid in Ø1050 and Ø1200 models.
- ✓ Fitted with 1" polypropylene arm collectors reinforced with fiberglass
- ✓ Maximum pressure: 2.5 bar
- ✓ Maximum temperature: 50°C.
- ✓ Manual 1" water drain in Ø500 up to Ø950 models and drain of 2 ½" in Ø1050 and Ø1200 models.
- ✓ Polyester Lateral sand discharge of Ø200mm on all models.

**CARACTERÍSTICAS**

- ✓ Filtros fabricados con proyección simultánea de resina de poliéster y fibra de vidrio.
- ✓ Altura de lecho filtrante: 1m.
- ✓ Filtro color: Marfil.
- ✓ Tapa superior de poliéster negro de Ø210 en los modelos de Ø500 hasta Ø950 y tapa superior de poliéster negro de Ø400 en los modelos de Ø1050 y Ø1200.
- ✓ Equipados con colectores de polipropileno de 1" reforzados con fibra de vidrio.
- ✓ Presión máxima: 2.5 bar
- ✓ Temperatura máxima: 50°C.
- ✓ Purga de agua manual de 1" en los modelos de in Ø500 hasta Ø950 y purga de 2 ½" en los de Ø1050 y Ø1200.
- ✓ Descarga lateral de arena de polyester de Ø200mm en todos los modelos.

**FILTER DETAILS**



▪ Cone diffuser



▪ Fitted with 1" polypropylene collector arms reinforced with fiberglass



▪ Manual water drain 1" in Ø500 up to Ø950 models and 2" 1/2 drain in Ø1050 and Ø1200 models



▪ Ø210 black polyester top lid from Ø500 up to Ø950 models and Ø400 black polyester top lid Ø1050 and Ø1200 models



▪ Ø200mm polyester lateral manhole

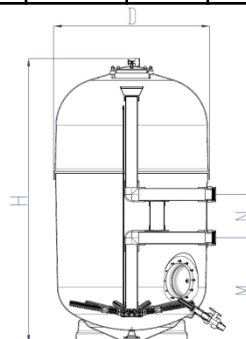
**TECHNICAL DATA**

**PACKAGING**

| Code      | Model (mm) | Connections (mm/inch) |      | Filtering velocity (m <sup>2</sup> /h/m <sup>2</sup> ) | Filtration Area (m <sup>2</sup> ) | Flow (m <sup>3</sup> /h) | Maximum pressure (bar) | Net weight (kg) | D (mm) | H (mm) | M (mm) | N (mm) | Units per pallet | Box dimension (cm) |
|-----------|------------|-----------------------|------|--|-----------------------------------|--------------------------|------------------------|-----------------|--------|--------|--------|--------|------------------|--------------------|
|           |            | mm                    | inch |  |                                   |                          |                        |                 |        |        |        |        |                  |                    |
| 34029-000 | 500        | 50                    | 1 ½" | 50   | 0.19                              | 10                       | 2.5                    | 60              | 530    | 1650   | 780    | 125    | 1                | 85x85x180          |
| 34030-000 | 650        | 50                    | 1 ½" | 50   | 0.33                              | 17                       | 2.5                    | 65              | 680    | 1700   | 775    | 125    | 1                | 85x85x185          |
| 34031-000 | 800        | 63                    | 2"   | 50   | 0.5                               | 25                       | 2.5                    | 70              | 830    | 1750   | 685    | 230    | 1                | 95x95x185          |
| 41187     | 950        | 75                    | 2 ½" | 50   | 0.7                               | 36                       | 2.5                    | 109             | 970    | 1760   | 655    | 270    | 1                | 110x110x190        |
| 41188     | 1050       | 90                    | 3"   | 50   | 0.86                              | 44                       | 2.5                    | 135             | 1090   | 1895   | 610    | 270    | 1                | 110x110x200        |
| 41189     | 1200       | 110                   | 4"   | 50   | 1.13                              | 57                       | 2.5                    | 155             | 1250   | 1970   | 665    | 270    | 1                | 135x135x200        |

**MEDIA WEIGHT**

| Code      | Sand (0.4-0.8) (kg) | Gravel (1-2mm) (kg) |
|-----------|---------------------|---------------------|
| 34029-000 | 225                 | 50                  |
| 34030-000 | 380                 | 100                 |
| 34031-000 | 530                 | 165                 |
| 41187     | 830                 | 260                 |
| 41188     | 1015                | 320                 |
| 41189     | 1360                | 410                 |





**FEATURES**

- ✓ Filters manufactured from polyester resin and fiberglass.
- ✓ Filtrating bed depth: 1m.
- ✓ Filter color: Ivory.
- ✓ Ø210 black polyester top lid from Ø500 up to Ø950 models and Ø400 black polyester top lid in Ø1050 and Ø1200 models.
- ✓ Fitted with 1" polypropylene arm collectors reinforced with fiberglass
- ✓ Maximum pressure: 4 bar.
- ✓ Maximum temperature: 50°C.
- ✓ Manual 1" water drain in Ø500 up to Ø950 models and drain of 2 ½" in Ø1050 and Ø1200 models.
- ✓ Polyester Lateral sand discharge of Ø200mm on all models.

**CARACTERÍSTICAS**

- ✓ Filtros fabricados con proyección simultánea de resina de poliéster y fibra de vidrio.
- ✓ Altura de lecho filtrante: 1m.
- ✓ Filtro color: Marfil.
- ✓ Tapa superior de poliéster negro de Ø210 en los modelos de Ø500 hasta Ø950 y tapa superior de poliéster negro de Ø400 en los modelos de Ø1050 y Ø1200.
- ✓ Equipados con colectores de polipropileno de 1" reforzados con fibra de vidrio.
- ✓ Presión máxima: 4 bar
- ✓ Temperatura máxima: 50°C.
- ✓ Purga de agua manual de 1" en los modelos de in Ø500 hasta Ø950 y purga de 2 ½" en los de Ø1050 y Ø1200.
- ✓ Descarga lateral de arena de polyester de Ø200mm en todos los modelos.

**FILTER DETAILS**



▪ Cone diffuser



▪ Fitted with 1" polypropylene collector arms reinforced with fiberglass



▪ Manual water drain 1" in Ø500 up to Ø950 models and 2" 1/2 drain in Ø1050 and Ø1200 models



▪ Ø210 black polyester top lid from Ø500 up to Ø950 models and Ø400 black polyester top lid Ø1050 and Ø1200 models



▪ Ø200mm polyester lateral manhole

**TECHNICAL DATA**

**PACKAGING**

| Code      | Model (mm) | Connections (mm/inch) |      | Filtering velocity (m <sup>2</sup> /h/m <sup>2</sup> ) | Filtration Area (m <sup>2</sup> ) | Flow (m <sup>3</sup> /h) | Maximum pressure (bar) | Net weight (kg) | D (mm) | H (mm) | M (mm) | N (mm) | Units per pallet | Box dimension (cm) |
|-----------|------------|-----------------------|------|--|-----------------------------------|--------------------------|------------------------|-----------------|--------|--------|--------|--------|------------------|--------------------|
|           |            | mm                    | inch |  |                                   |                          |                        |                 |        |        |        |        |                  |                    |
| 43198-000 | 500        | 50                    | 1 ½" | 50   | 0.19                              | 10                       | 2.5                    | 60              | 530    | 1650   | 780    | 125    | 1                | 85x85x180          |
| 43199-000 | 650        | 50                    | 1 ½" | 50   | 0.33                              | 17                       | 2.5                    | 65              | 680    | 1700   | 775    | 125    | 1                | 85x85x185          |
| 43200-000 | 800        | 63                    | 2"   | 50   | 0.5                               | 25                       | 2.5                    | 70              | 830    | 1750   | 685    | 230    | 1                | 95x95x185          |
| 43201     | 950        | 75                    | 2 ½" | 50   | 0.7                               | 36                       | 2.5                    | 109             | 970    | 1760   | 655    | 270    | 1                | 110x110x190        |
| 43202     | 1050       | 90                    | 3"   | 50   | 0.86                              | 44                       | 2.5                    | 135             | 1090   | 1895   | 610    | 270    | 1                | 110x110x200        |
| 43203     | 1200       | 110                   | 4"   | 50   | 1.13                              | 57                       | 2.5                    | 155             | 1250   | 1970   | 665    | 270    | 1                | 135x135x200        |

**MEDIA WEIGHT**

| Code      | Sand (0.4-0.8) (kg) | Gravel (1-2mm) (kg) |
|-----------|---------------------|---------------------|
| 43198-000 | 225                 | 50                  |
| 43199-000 | 380                 | 100                 |
| 43200-000 | 530                 | 165                 |
| 43201     | 830                 | 260                 |
| 43202     | 1015                | 320                 |
| 43203     | 1360                | 410                 |

