

# BADU® Bronze

Corrosion resistant, pure bronze pump. Durable and extra quiet.  
For large pools and swimming baths.

## Field of application

Swimming pool water circulation through a filter system.  
The pump can be installed max. 3 m above or below water level.

## Design

Monoblock-type pump with integrated strainer tank.  
The bellows-type mechanical seal is mounted on a plastic shaft protector sleeve. Heavy bronze housing, quiet running and high stability.  
Strainer tank capacity ..... approx. 3 l  
Strainer basket mesh size ..... approx. 3.2 x 2.6 mm

## Materials used

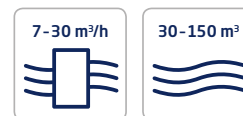
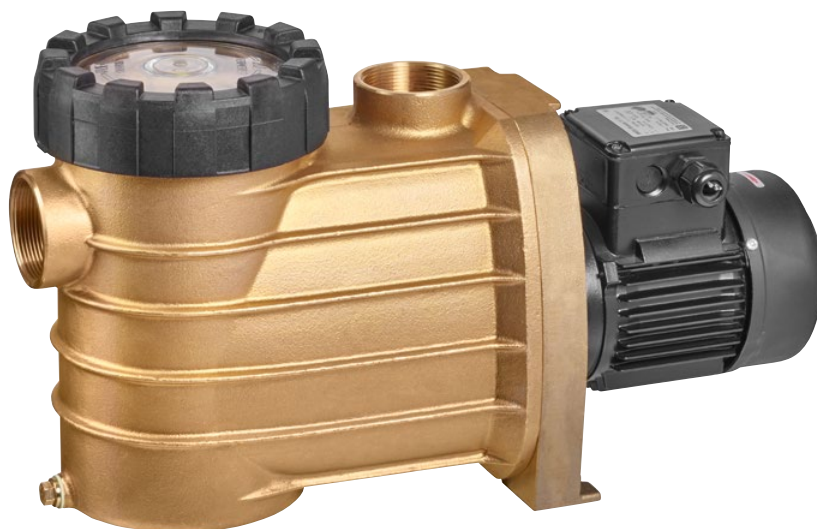
Pump casing ..... G-Cu Sn 10  
Housing cover ..... G-Cu Sn 10  
Diffuser ..... PA 66 GF 30/PP GF 30  
Impeller ..... PP GF 30  
Strainer basket ..... PP  
Lid ..... PC, transparent/PA 66 GF 30  
Mechanical seal ..... carbon/ceramic/NBR  
Screws ..... stainless steel  
Elastomers ..... NBR/viton

Technical data at 50 Hz	BADU Bronze	7	11	14	22	25	30
Inlet Sa/outlet connection Da Rp <sup>2)</sup>		2/2	2/2	2/2	2/2	2/2	2/2
Rec. inlet/outlet pipe, PVC pipe, d <sup>4)</sup>		50/50	50/50	63/50	63/63	63/63	75/63
Power input P <sub>1</sub> /output P <sub>2</sub> <sup>1)</sup> (kW)	1~ 230 V	0.50/0.30	0.69/0.45	0.87/0.55	1.40/1.00	1.74/1.30	2.00/1.50
Rated current (A)	1~ 230 V	2.40	3.00	4.00	6.70	7.80	8.90
Power input P <sub>1</sub> /output P <sub>2</sub> <sup>1)</sup> (kW)	3~ Y/Δ 400/230 V	0.44/0.30	0.63/0.45	0.75/0.55	1.26/1.00	1.56/1.30	1.77/1.50
Rated current (A)	3~ Y/Δ 400/230 V	0.95/1.65	1.25/2.15	1.55/2.70	2.25/3.90	2.80/4.85	3.30/5.72
Net weight (kg)	1~/3~	26.00/25.00	26.00/25.00	27.00/27.00	32.00/28.00	32.00/31.50	34.50/33.00

For more detailed information regarding the motor protection please see page 167.

Article no	Description	Voltage	Power output P <sub>2</sub>
210.1007.038	BADU Bronze 7	1~ 230 V	0.30 kW
210.1011.038	BADU Bronze 11	1~ 230 V	0.45 kW
210.1014.038	BADU Bronze 14	1~ 230 V	0.55 kW
210.1022.038	BADU Bronze 22	1~ 230 V	1.00 kW
210.1025.038	BADU Bronze 25	1~ 230 V	1.30 kW
210.1030.038	BADU Bronze 30	1~ 230 V	1.50 kW
210.1007.037	BADU Bronze 7	3~ Y/Δ 400/230 V	0.30 kW
210.1011.037	BADU Bronze 11	3~ Y/Δ 400/230 V	0.45 kW
210.1014.037	BADU Bronze 14	3~ Y/Δ 400/230 V	0.55 kW
210.1022.037	BADU Bronze 22	3~ Y/Δ 400/230 V	1.00 kW
210.1025.037	BADU Bronze 25	3~ Y/Δ 400/230 V	1.30 kW
210.1030.037	BADU Bronze 30	3~ Y/Δ 400/230 V	1.50 kW

Universal opening device included in delivery. See page 154.



### Performance

### Dimensions

Detailed dimensions available on request or at badu.de

