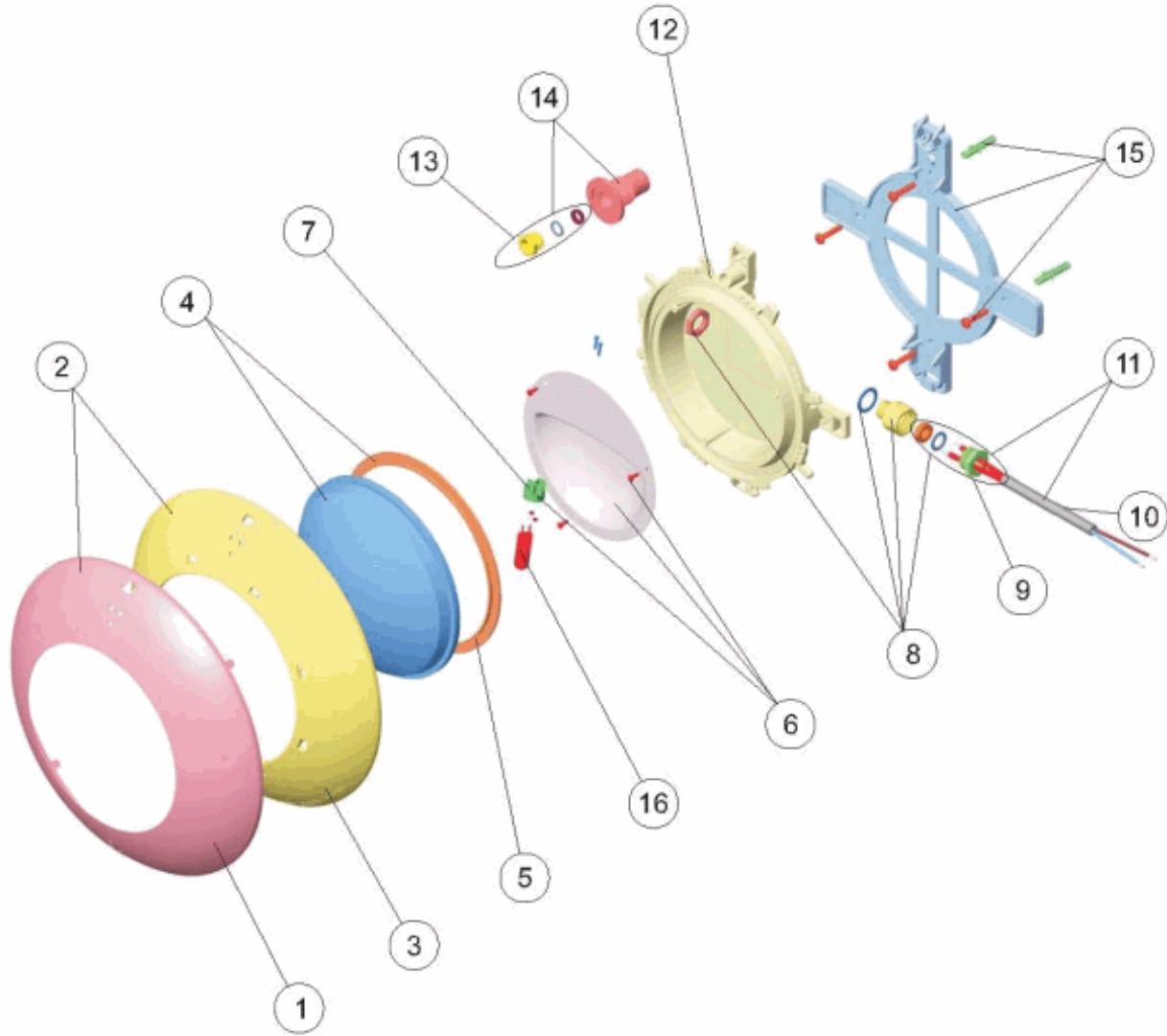


CODE **21626, 35666**

DESCRIPTION: **EXTRA-FLAT LIGHT CONCRETE POOL**



ENGLISH

POS	CODE	DESCRIPTION	POS	CODE	DESCRIPTION
1	* 4403012304	RUSTPROOF DECORATIVE RING	9	4403014101	KIT PLUG PACKING GLAND 12X2
2	* 4403012301	SET RUSTPROOF DECORATIVE RING	10	4403011905	LIGHT CABLE
3	* 4403011901	FLAT LIGHT FACEPLATE	11	4403015405	PROJECTOR CABLE, PACKING GLANDS PROJECTOR
4	4403012303	CLEAR LENS + GASKET	12	4403011908	LIGHT BODY
5	4403010102	LIGHT SILICON GASKET	13	4403012704	PACKING GLAND PG-9
6	4403011903	LAMPHOLDER REFLECTOR PLATE	14	4403011907	CONDUIT CONNECTOR
7	4403011407	LAMP HOLDER	15	4403011906	LIGHT SUPPORT
8	4403012302	GLAND SEAL M-16 KT 19,5X2	16	4403010069	LIGHTBULB 12 V. 100 W.

CODE **21626, 35666**DESCRIPTION: **EXTRA-FLAT LIGHT CONCRETE POOL****OBSERVATIONS**

POSICIÓN	PIEZA	OBSERVACIÓN
1	4403012304	PARA 35666
2	4403012301	PARA 35666
3	4403011901	PARA21626